

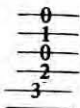
## Note on reading the tablature

Michael "Hawkeye" Herman  
www.HawkeyeHerman.com

The guitar tablature provided here is a substitute for (or a supplement to) the standard musical notation. The six lines represent the six strings of the guitar, with the bass E as the bottom line.



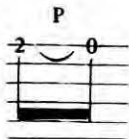
The number of the line is the fret at which the left hand finger stops the string. Thus, a C chord would be shown as



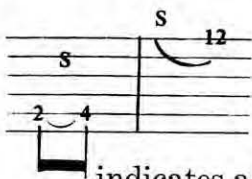
Two notes tied together with the letter H in between indicates a “hammer-on”:



P is a “pull-off” (left hand pluck):



S is a slide from one fret to another, or to a fret from an optional point below it:



indicates a “choked” or “slurred” note, produced by stretching the string with the finger that is fretting it, thus raising the note, making a whining blue-note effect. A note can be raised a half tone or more this way.